

EAST AURORA HIGH SCHOOL
BAND AUDITION PACKET

Saxophone

Audition Requirements:

1. Know all scales on the enclosed scale sheet in the full range that is written.
2. The judge will ask you to play 2 Major Scales and the Chromatic Scale.
3. Play the attached etudes (Music Pieces) with:
 - a. Accurate Tempo
 - b. Correct Notes
 - b. Correct Rhythms
 - c. Dynamics
 - d. Musical Expression
 - e. Sight Reading

Auditions will take place on **Tuesday, March 24** after school. Each student will be required to sign up for a time slot.

Students will be selected based on how well they play the audition, their maturity level, and instrumentation desired. We are interested in seeing how hard you have worked on the music. A student who has practiced a lot and plays the music well will get in over a student who is sight-reading the music the day of the audition.

Woodwinds, Trumpets, and French Horns will have *two audition rooms.*

Etude room: You will play both etudes for the judge. Once completed, you must go to the scale room.

Scale and Sight-reading room: You will perform 2 scales from the list **and** the chromatic scale. You will then have 30 seconds to look at the sight-reading excerpt and will be expected to play it through to the best of your ability.

Low Brass players will only go to one room where they will complete all three parts of the audition.

Percussion will have one room and perform all four parts of the audition at a time.

You must arrive to your room 10 minutes before you perform. If you miss your time, you will have to wait until the judge has a break or until the very end of the day.

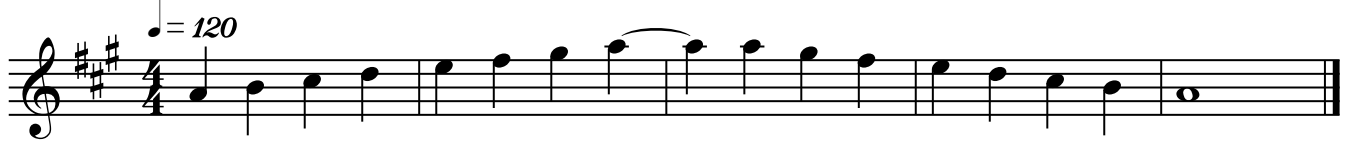
Any portion of the audition that is incomplete will automatically disqualify you for Wind Ensemble. It is crucial you complete the audition in the correct order and in full.

IHSA Required Scales

E-Flat Alto Saxophone

All scales for wind instruments shall be played two octaves where applicable but one octave where range restricts. Scales and the chromatic will be played from memory. The scales listed, including the chromatic scale, will be called for in concert pitch and will be played two octaves, both up and down. This means that each player who plays a transposing instrument will have to transpose the given scale.

Concert C Scale (your A Scale)



Concert F Scale (your D Scale)



Concert B-Flat Scale (your G Scale)



Concert E-Flat Scale (your C Scale)



IHSA Required Scales

Concert A-Flat Scale (your F Scale)

Musical notation for the Concert A-Flat Scale (your F Scale). The scale is written in treble clef with a key signature of one flat (B-flat). The tempo is marked as quarter note = 120. The scale consists of two lines of music: the first line shows the ascending scale from A-flat to G, and the second line shows the descending scale from G to A-flat.

Concert D-Flat Scale (your B-flat Scale)

Musical notation for the Concert D-Flat Scale (your B-flat Scale). The scale is written in treble clef with a key signature of two flats (B-flat and E-flat). The tempo is marked as quarter note = 120. The scale consists of two lines of music: the first line shows the ascending scale from D-flat to C, and the second line shows the descending scale from C to D-flat.

Concert G Scale (your E Scale)

Musical notation for the Concert G Scale (your E Scale). The scale is written in treble clef with a key signature of three sharps (F#, C#, G#). The tempo is marked as quarter note = 120. The scale consists of two lines of music: the first line shows the ascending scale from G to F#, and the second line shows the descending scale from F# to G.

Chromatic Scale-Concert F to F Chromatic Scale (your D to D Chromatic Scale)

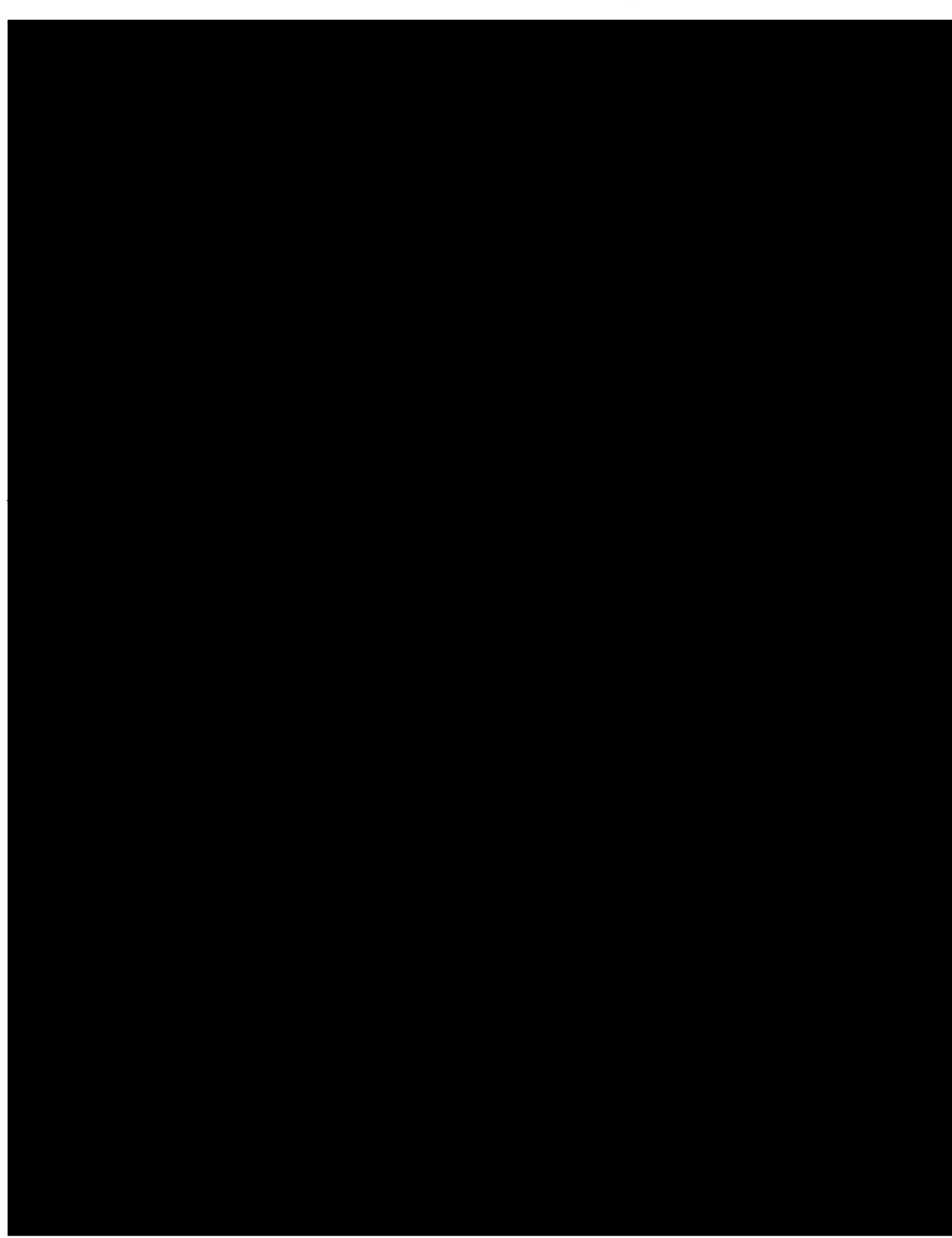
Musical notation for the Chromatic Scale-Concert F to F Chromatic Scale (your D to D Chromatic Scale). The scale is written in treble clef with a key signature of two sharps (F# and C#). The tempo is marked as quarter note = 120. The scale consists of three lines of music: the first line shows the ascending chromatic scale from F to F#, the second line shows the descending chromatic scale from F# to F, and the third line shows the ascending chromatic scale from F to F#.

A

Audition Material

No 3

Largo
ff



Allegro moderato

The image displays a musical score for a piece titled "Allegro moderato". The score is written on six staves, each beginning with a treble clef and a key signature of two sharps (F# and C#). The time signature is 2/4. The music consists of a continuous melodic line with various rhythmic patterns, including eighth and sixteenth notes, often beamed together. There are several accents (>) and slurs throughout the piece. The notation is clear and professional, typical of a printed musical score. The bottom portion of the page is obscured by a large black redaction box.

The image shows two staves of musical notation. The top staff begins with a treble clef, a key signature of one sharp (F#), and a common time signature (C). The music consists of a series of eighth and sixteenth notes, many of which are beamed together. There are several flats (b) and a double flat (bb) scattered throughout the notation. The bottom staff also begins with a treble clef and the same key signature. It features similar rhythmic patterns, including beamed eighth and sixteenth notes, with various accidentals. The notation is dense and complex, typical of a technical exercise or a piece of contemporary music.

B

Audition Material

Articulation Etude

WOHLFAHRT

1 *Allegretto* *mf*

2 *Allegro* *f* **DANCE** *Fine* *D. C.*

3 *Moderato* *f* **COUNTRY DANCE** *mf* *mf*

27

Con brio

mp

This section of the musical score, covering measures 27 through 31, is almost entirely obscured by thick, black, hand-drawn scribbles. The scribbles are dense and diagonal, crossing multiple staves and making the underlying musical notation nearly illegible. Only some notes and stems are visible through the ink.

28

Cantabile

$\text{♩} \approx 85$

mp

This section of the musical score, covering measures 28 through 33, is clearly legible. It features six staves of music in a treble clef with a key signature of one sharp (F#) and a common time signature (C). The tempo is marked 'Cantabile' with a handwritten note indicating a quarter note is approximately 85 beats per minute ($\text{♩} \approx 85$). The dynamics are marked 'mp' (mezzo-piano). The music consists of a variety of note values, including quarter, eighth, and sixteenth notes, as well as rests and slurs.